

# Office to let

## Elefterie 18 Office Building

Bucharest, Sector 5, Street Elefterie No. 18

### Building information

Building status	Existing
Year of construction	2009
Parking ratio	1 / 70 sq m
Total building area	

### Commercial terms

Office space*	after login *
Parking	after login *
Service charge*	after login *
Minimum lease term	after login *
Availability	after login *

\* Asking terms for m<sup>2</sup>/month


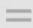



### Location



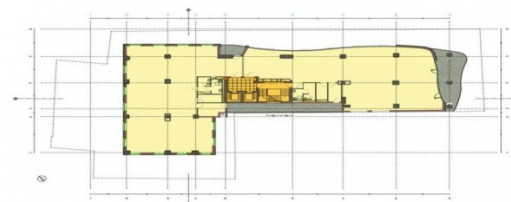
### Available space

Building completely leased

## Standard fit-Out

-  Air conditioning
-  Raised floor
-  Suspended ceiling
-  UPS
-  Elevators

## Typical floor plan



## Public transport

Metro: M1, M3

Bus: 122, 126, 137, 138, 168, 226, 236, 268, 336, 368, 668, N110, 104, 123, 124, 601, N115

## Contact



+40 21 302 3400

[More information](#)